

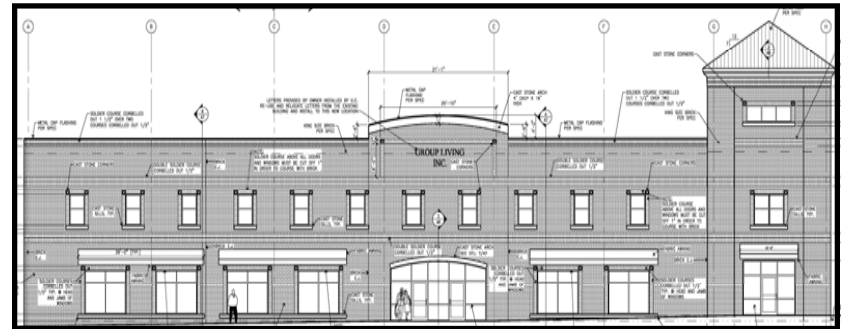
Group Living, Inc.  
Shovel Ready in Arkadelphia  
April 30, 2009



Beehive August 16, 2005



Beehive Fire August 17, 2005



Proposed New Storefront

Financial Impact on the Area

Annual Budget of Organization - \$2.7 Million  
Annual Payroll - \$1.9 Million  
Beehive Annual Gross Income - \$241,000  
Beehive Customers Per Year - 20,800  
Beehive Staff

Currently 7, will expand to 10-15 after construction

Beehive Clients

Currently 12, will expand to 18 after construction

Office Staff

Currently 20, potential for 25 after construction

Personnel (Total Program)

50 Full Time Employees  
55 Part Time Employees  
57 Volunteers

Construction Started



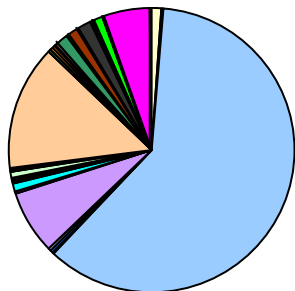
**Funds/Pledges in Hand**  
\$2.1 Mil

**Funds Still Needed**  
\$1.5 Mil

700 Block will provide:

New Beehive Thrift Store -  
Beehive Store must relocate by January, 2010  
New Group Living Offices  
Great Hall for Community Meetings/Catering/Etc.

Beehive Customer Area Demographic  
2 Week Sample Period



- |               |                   |                   |
|---------------|-------------------|-------------------|
| Almyra        | Alpine            | Amity             |
| Antoine       | Arkadelphia       | Bearden           |
| Benton        | Bieme             | Bismarck          |
| Blevins       | Bonnerdale        | Camden            |
| Carthage      | Charleston        | Conway            |
| Curtis        | Delight           | Dollarway         |
| Donaldson     | Dundee MS         | Eldorado          |
| Freeport IL   | Friendship        | Gurdon            |
| Harrell       | Hartford          | Heflin LA         |
| Hope          | Hot Springs       | Huntington        |
| Leola         | Little Rock       | Mabelvale         |
| Malvern       | Marion, LA        | Memphis TN        |
| Murphreesboro | North Little Rock | Oklahoma City, OK |
| Okolona       | Pallock, LA       | Pearcy            |
| Pine Bluff    | Prescott          | Rockford IL       |
| Sherwood      | Sparkman          | Texarkana         |

